

Biophysical context of the Malheur National Forest

Overview

This paper graphically illustrates the biophysical characteristics of the Malheur National Forest (MNF) relative to other national forests located east of the Cascades in Oregon and Washington. The MNF has similar elevational characteristics as other eastside national forests, although less very high elevation lands. The MNF has high summer temperatures, low precipitation, and high annual solar radiation relative to other national forests in the inland Pacific Northwest.

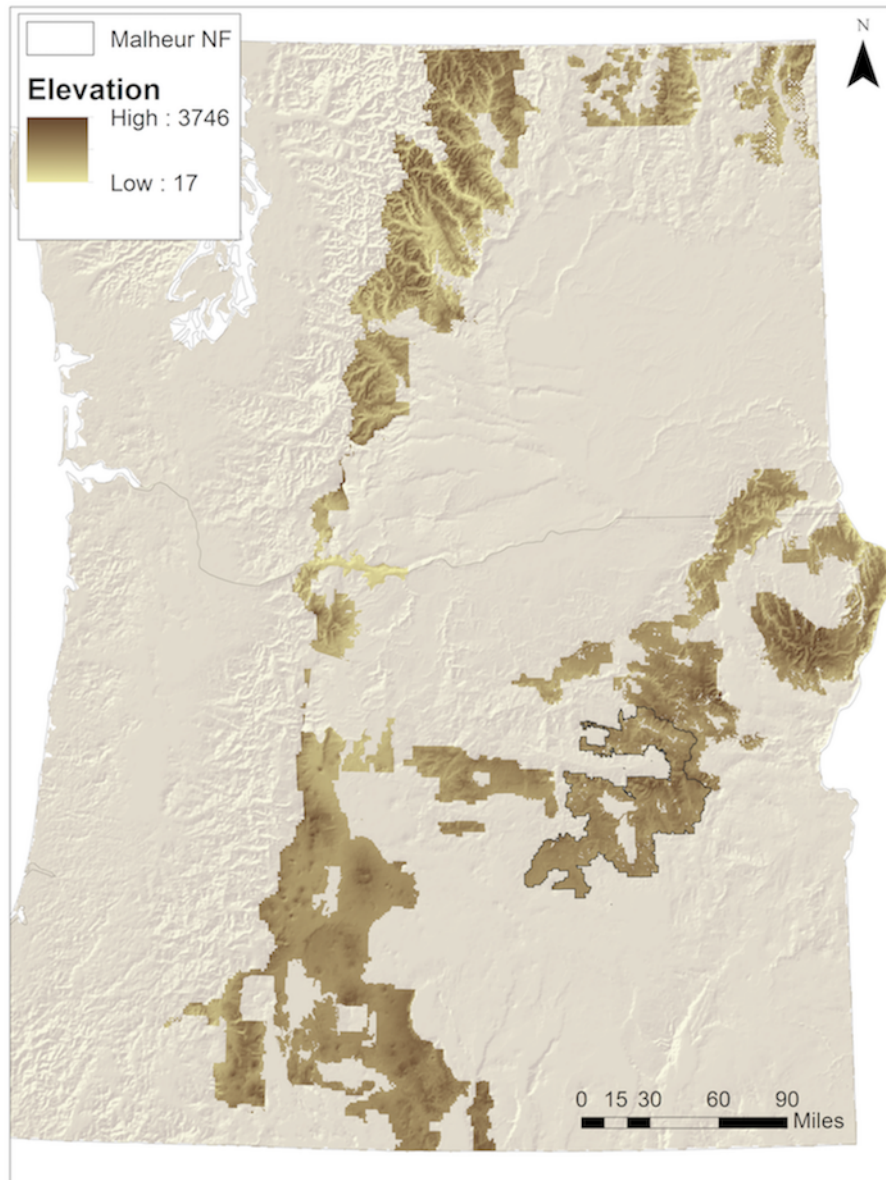


Figure 1. Elevational characteristics of eastside national forests.

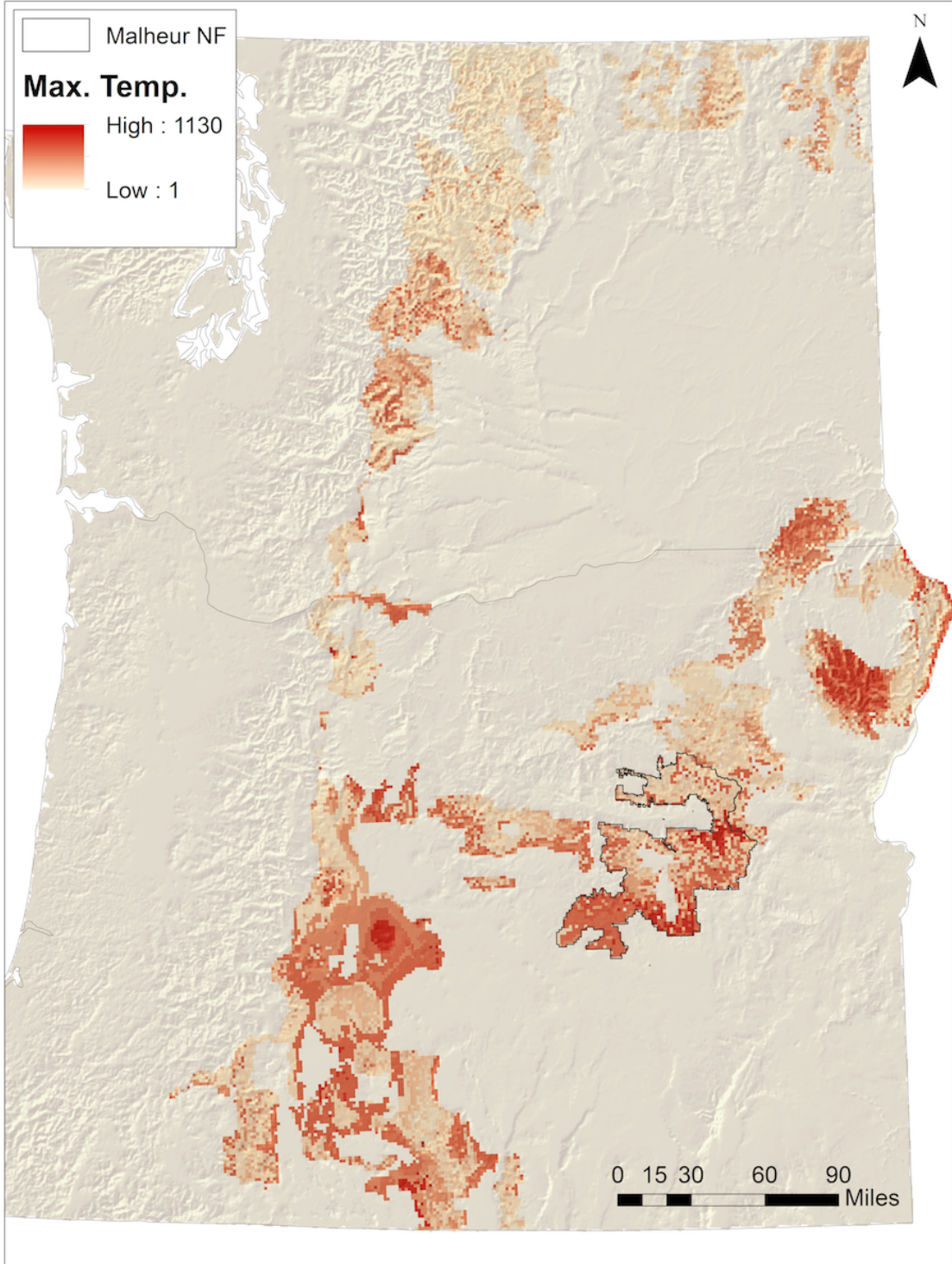


Figure 2. Maximum summer temperatures within eastside national forests.

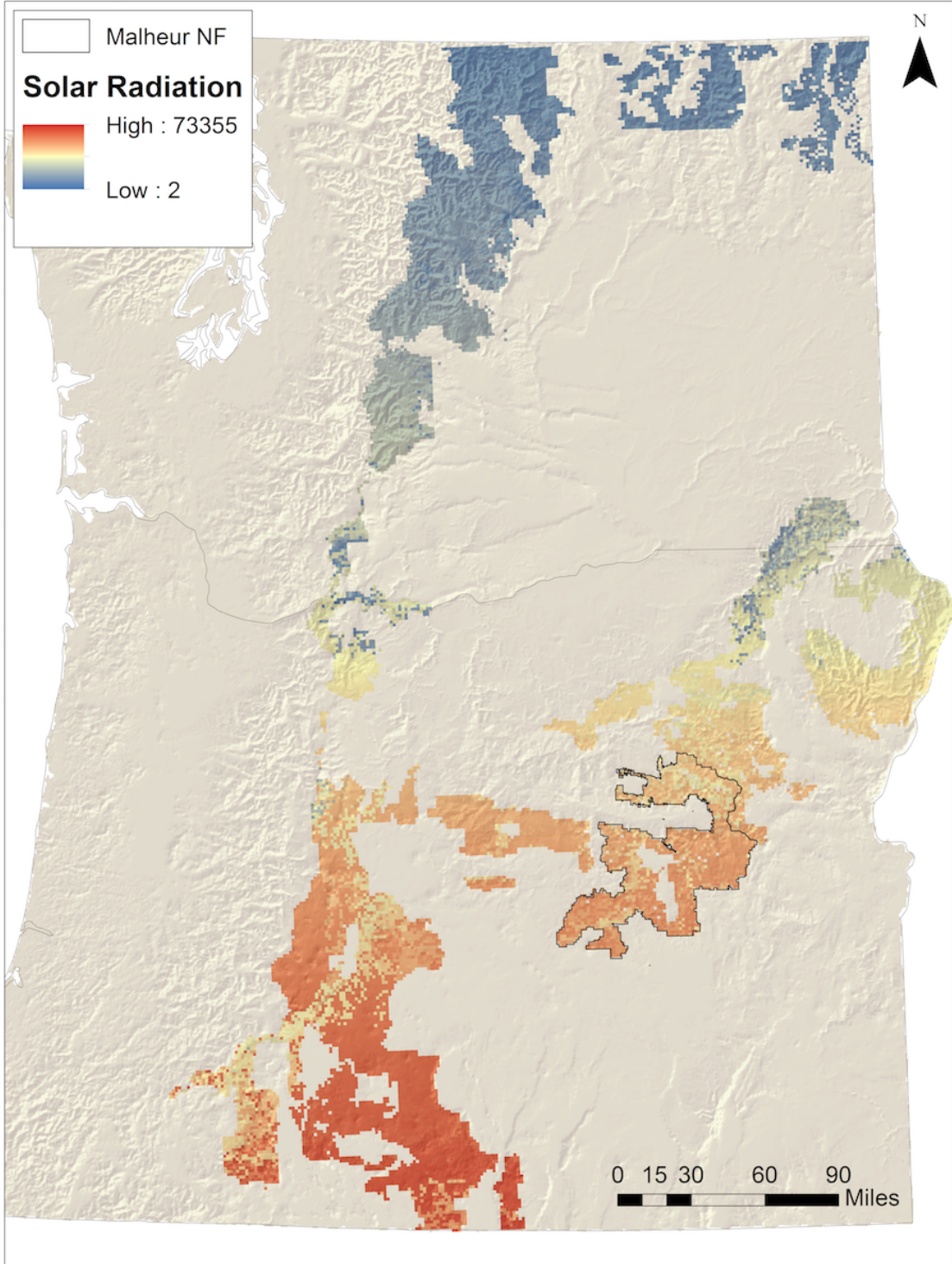


Figure 3. Annual solar radiation within eastside national forests.

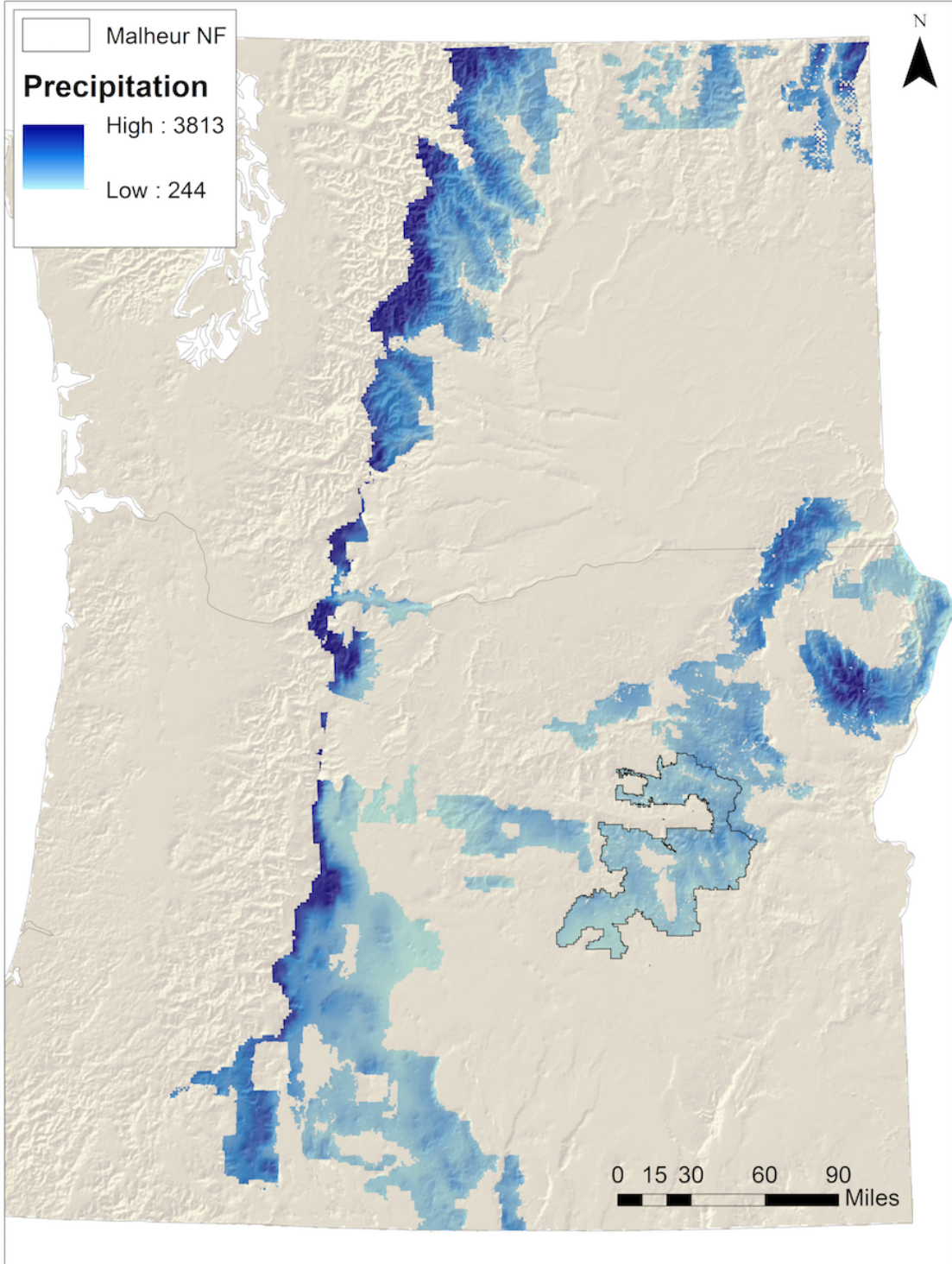


Figure 4. Annual precipitation within eastside national forests.

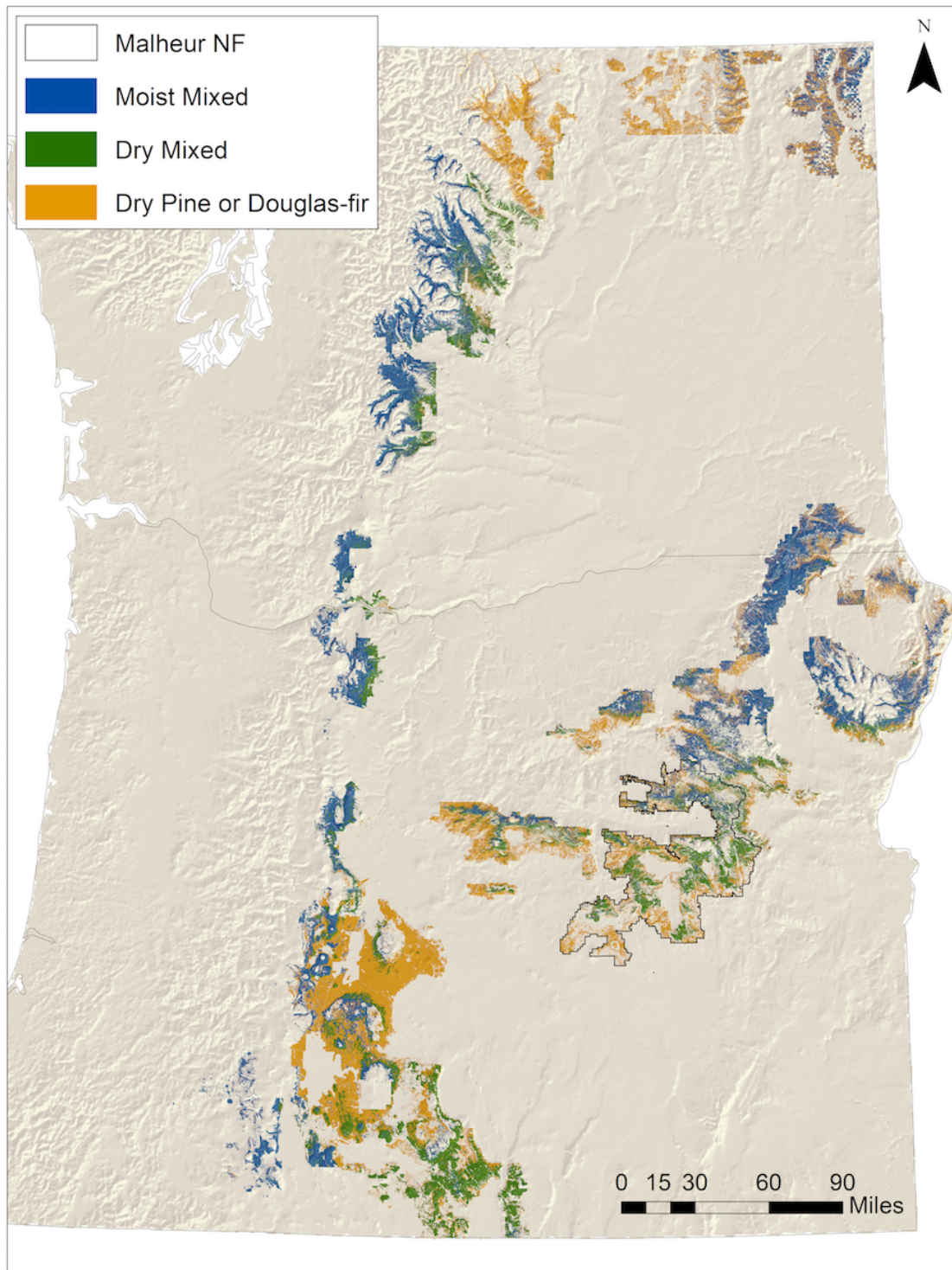


Figure 5. Distribution of forest types within eastside national forests.